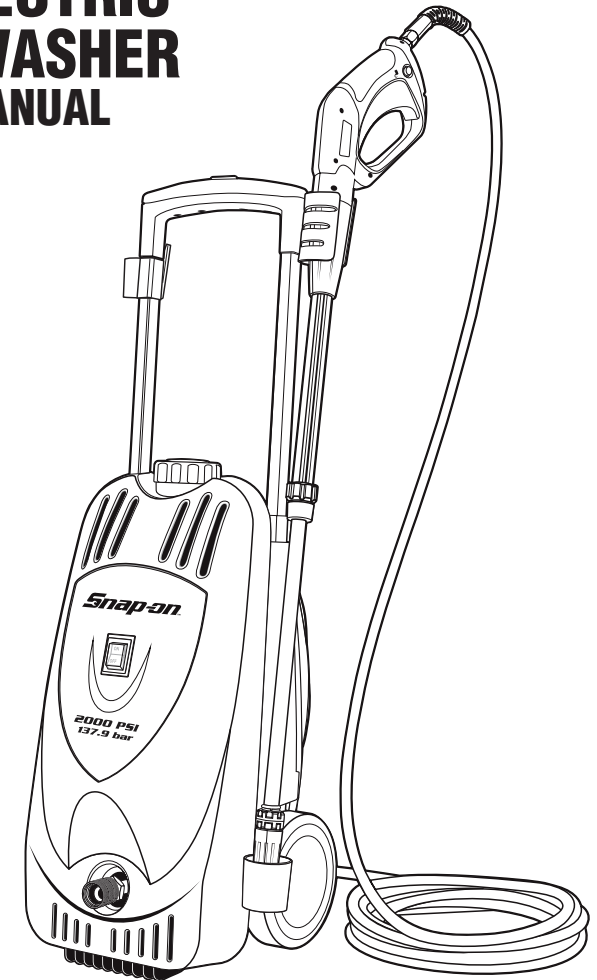


# Snap-on™

COMPONENT 691699  
ITM./ART. 476052

## 2000 PSI ELECTRIC PRESSURE WASHER INSTRUCTION MANUAL



For consumer questions or comments,  
please call 1-888-278-8092.

Days/Hours of operation:  
9am-7pm EST Monday - Friday  
10am-6pm EST Saturday - Sunday

English and Spanish Speaking  
Customer Service Representatives are  
Available.



Intertek

Conforms to Std. UL 1776  
Certified to CAN/CSA-C22.2  
STD No.68-92

# Snap-on™

SNAP-ON™ IS A TRADEMARK LICENSED BY SNAP-ON™ CORP.,  
U.S.A., WHICH DOES NOT MANUFACTURE OR  
DISTRIBUTE THIS PRODUCT. CONSUMER INQUIRES SHOULD BE  
DIRECTED TO:

©COPYRIGHT 2009 ALLTRADE TOOLS, LLC.  
1431 VIA PLATA  
LONG BEACH, CA 90810-1462 USA

691699 - 2000 PSI Electric Pressure Washer\_Rev 11/5/09

**FOR CUSTOMER SERVICE**  
**1-888-278-8092**

Printed in China

THIS MANUAL CONTAINS IMPORTANT INFORMATION REGARDING SAFETY, OPERATION, MAINTENANCE AND STORAGE OF THIS PRODUCT. BEFORE USE, READ CAREFULLY AND UNDERSTAND ALL CAUTIONS, WARNINGS, INSTRUCTIONS AND PRODUCT LABELS. FAILURE TO DO SO COULD RESULT IN SERIOUS PERSONAL INJURY AND/OR PROPERTY DAMAGE.

IF YOU SHOULD HAVE ANY QUESTIONS OR EXPERIENCE A PROBLEM WITH YOUR SNAP-ON PRODUCT, DO NOT RETURN THIS PRODUCT TO THE STORE. PLEASE CALL OUR CUSTOMER SERVICE DEPARTMENT AT **1-888-278-8092**. BEFORE YOU CALL, HAVE THE FOLLOWING INFORMATION AVAILABLE: MODEL No., DATE PURCHASED AND STORE LOCATION. AN ALLTRADE REPRESENTATIVE CAN RESOLVE YOUR PROBLEM OVER THE PHONE.

## TABLE OF CONTENTS

<b>CONGRATULATIONS!</b> .....	1
<b>INTRODUCTION</b> .....	2
GENERAL SAFETY .....	2-4
RECOGNIZE SAFETY SYMBOLS, WORDS AND LABELS .....	2-3
IMPORTANT INFORMATION ABOUT THIS MANUAL .....	4
UNPACKING & INSPECTION .....	4
SAFETY WARNINGS .....	5-6
GENERAL SAFETY RULES .....	5-6
SAFETY RULES FOR PRESSURE WASHERS .....	6-10
GROUND-FAULT CIRCUIT - INTERRUPTER PROTECTION .....	9
GROUNDING INSTRUCTIONS .....	9-10
EXTENSION CORD USAGE .....	10
FUNCTIONAL DESCRIPTION .....	11
PRESSURE WASHER TERMINOLOGY .....	11
ASSEMBLY & SETUP .....	12-13
OPERATING THE PRESSURE WASHER .....	14-17
WATER FLOW ADJUSTMENT .....	15
USING SPRAY WAND .....	15-16
SHUTTING DOWN PRESSURE WASHER .....	16
USAGE OF CLEANING DETERGENTS .....	16-17
MAINTENANCE .....	17-19
TROUBLESHOOTING GUIDE .....	19-24
SPECIFICATIONS .....	24-25
1 YEAR LIMITED WARRANTY .....	25-27

## CONGRATULATIONS!

Thank you for choosing this pressure washer. Our aim is to provide you with quality professional products, and we want you to be totally satisfied with your product and our Customer Service. If any help or advice is needed, please contact us at 1-888-278-8092. When properly cared for, this product will give you many years of satisfaction.

For consumer questions or comments, please call 1-888-278-8092.

Days/Hours of operation:  
9am-7pm EST Monday - Friday  
10am-6pm EST Saturday - Sunday

English and Spanish Speaking Customer Service Representatives are Available.

## INTRODUCTION

This instruction manual is intended for your benefit. Please read and follow the safety, installation, maintenance and troubleshooting steps described within to ensure your safety and satisfaction. The contents of this instruction manual are based upon the latest product information available at the time of publication. The manufacturer reserves the right to make product changes at any time without notice.

## GENERAL SAFETY

### **WARNING**

### **READ AND FOLLOW ALL INSTRUCTIONS.**

Failure to follow all instructions in this manual may result in severe personal injury or death. Keep this manual and refer to it for Safety Instructions, Operating Procedures, and Warranty.



## SAVE THESE INSTRUCTIONS FOR FUTURE REFERENCE.

### RECOGNIZE SAFETY SYMBOLS, WORDS AND LABELS

The safety instructions provided in this manual are not intended to cover all possible conditions and practices that may occur when operating, maintaining and cleaning power tools.

Always use common sense and pay particular attention to all the **DANGER**, **WARNING**, **CAUTION** and **NOTE** statements in this manual.



This is the safety alert symbol. It is used to alert you to potential personal injury hazards. Obey all safety messages that follow this symbol to avoid possible injury or death.

### **DANGER**

**DANGER** indicates an imminently hazardous situation which, if not avoided, will result in death or serious injury.

### **WARNING**

**WARNING** indicates a potentially hazardous situation which, if not avoided, could result in death or serious injury.

**CAUTION**

**CAUTION** indicates a potentially hazardous situation which, if not avoided, may result in minor or moderate injury.

**CAUTION**

**CAUTION** used without the safety alert symbol indicates a potentially hazardous situation which, if not avoided, may result in property damage.

**NOTE**

**NOTE** provides additional information that is useful for proper use and maintenance of this tool. If a NOTE is indicated, make sure it is fully understood.

In addition to **SAFETY ALERTS** listed above, there could also be numerous symbols alerting the operator that specific safety measures are required to safely operate this tool. Learn these **SAFETY SYMBOLS** as well as the **SAFETY ALERTS** to prevent injury to the operator and to bystanders.



**READ OPERATING INSTRUCTIONS:** Read and understand tool labels, safety warnings and precautions in this manual before operating the tool. Failure to follow WARNINGS could result in serious injury or even death to the operator or bystanders.



**ELECTRICAL SHOCK:** This tool produces hazardous electrical voltage. Read and become familiar with this manual's WARNINGS and CAUTIONS so that it is installed and used properly.



**WEAR APPROVED EYE PROTECTION:** Spray can splash back or propel objects, including incorrectly attached accessories. Always wear approved eye protection. Safety glasses must conform to the requirements of American National Standards Institute (ANSI) Z87.1 and provide protection against flying particles from both front and side.



**INJECTION HAZARD:** Pressure washers can produce fluid streams severe enough to penetrate animal and human flesh.



**SLIPPING and FALLING:** Pressure washers produce puddles of slippery liquid that can result in falls. Kickback from spray wand can result in falls when using unstable platforms.

## IMPORTANT INFORMATION ABOUT THIS MANUAL

**WARNING**

**Improper and unsafe use of this Pressure Washer can result in death, fire and/or bodily injury. This instruction manual contains important information about product safety. Keep the instruction manual available for others to read before they use the Pressure Washer.**

Improper maintenance and operation are responsible for the majority of accidents involving Pressure Washers. The largest portion of these could be prevented by recognizing the basic safety rules and precautions. Most accidents can be avoided if the operator recognizes a potentially hazardous situation before it happens and by observing appropriate safety rules and procedures as outlined in this manual.

Basic safety precautions are outlined in the **SAFETY** portion of this manual and throughout the text in this manual where a potential hazard might occur.

Hazards that **MUST** be avoided to prevent serious injury follow headers marked **DANGER or WARNING**. These same precautions are placed as labels on the tool itself.

**NEVER** use this Pressure Washer for applications that are **NOT** specified in this manual.

### UNPACKING & INSPECTION

After opening the carton, unpack your new Pressure Washer and related parts & accessories. Please inspect it carefully for any damage that may have occurred during transit. If any parts are missing, please contact our Consumer Helpline: Phone: 1-888-278-8092

**WARNING**

**Do not operate this Pressure Washer if damaged during shipment, handling or misuse. Damage may result in bursting, which can cause serious injury or property damage. All damaged parts must be repaired or replaced as needed prior to operating this Pressure Washer.**

Check to see that all nuts, bolts and fittings are secure before putting this Pressure Washer into service. If you have any questions, or require assistance with damaged or missing parts, please contact our Consumer Helpline: Phone: 1-888-278-8092

Please have the serial number, model number, date of purchase, and parts list (with missing parts identified) available for reference when calling.

MODEL NUMBER: \_\_\_\_\_  
SERIAL NUMBER: \_\_\_\_\_  
DATE OF PURCHASE: \_\_\_\_\_

## SAFETY WARNINGS

# READ ALL SAFETY WARNINGS BEFORE USING PRESSURE WASHER.

### GENERAL SAFETY RULES

#### WARNING

People with electronic devices, such as pacemakers, should consult their physician(s) before using this product. Operation of electrical equipment in close proximity to a heart pacemaker could cause interference or failure of the pacemaker.

**WARNING:** This product contains chemicals known to the State of California to cause cancer and birth defects or other reproductive harm.

#### WARNING

**Keep work area clean and well lit.** Messy areas and cluttered workbenches invite personal injury and/or property damage. Clear all work areas of unnecessary tools, debris, furniture, etc.

**Make sure the work area is well ventilated.** Never operate in an enclosed area.

**Do not place objects on top or against the tool.**

**Handle correctly. Always operate according to the instructions provided.** Never allow the tool to be operated by children, individuals unfamiliar with its operation or unauthorized personnel.

**Keep children and visitors away.** All children should be kept away from the work area. **DO NOT** let children handle the tool. Maintain a safe distance for any person near the work area.

**Childproof the workshop.** The use of master switches and padlocks is highly recommended. Remove starter keys where applicable.

**Stay alert, watch what you are doing, and use common sense. Do not stand on tool. Do not use tool while tired or under the influence of drugs, alcohol or medication.** A moment of inattention while operating the tool may result in serious personal injury.

**Operating any tools or equipment under the influence of drugs, alcohol, or medication can cause personal injury to yourself and others.**

**Use the right tool. Use tools properly and for their intended task.** Do not force a small tool to do the job of a heavy-duty tool. Using the right tool to do the right job will make doing the job safer.

#### WARNING

**Always make sure the tool is in the OFF position when making adjustments, changing parts, or performing any maintenance.**

**Service must be performed only by qualified repair personnel.** Service or maintenance by unqualified personnel may result in a risk of injury.

**Do not use the tool if the power switch does not turn it “ON” or “OFF”.** A tool that cannot be controlled with the switch is dangerous and must be repaired.

**Store all maintenance tools away from the immediate area before turning ON the tool.**

**Do not overreach.** Proper footing and balance is a must at all times while using tools. Unstable support may lead to personal injury. Do not stand on the tool. Serious injury could result if the tool tips over or you accidentally contact tool.

**When using accessories, consult the owner’s manual provided by the manufacturer.** The use of improper accessories may cause risk of injury to yourself and others.

**Keep protective guards in place and in proper working condition.**

**Maintain tools and equipment with care.** They will function better and more safely when kept clean and in good working condition. Keeping the tool clean, dry, and free of grime will add to its life and performance.

**Do not use the tool for applications other than specified.**

## SAFETY RULES FOR PRESSURE WASHERS

#### WARNING

#### RISK OF INJURY

**TO reduce the risk of injury, user must read and understand all safety instructions and warnings at the beginning of this manual.**



**Pressure Washer produces fluid pressures and velocities high enough to penetrate human and animal flesh which could result in serious injury or amputation.**

**Ensure all connections are tightened securely.** Inspect all hoses to ensure they are not damaged or kinked. Loose connections or damaged hoses can result in injection injuries.

**Ensure all fittings are properly connected.** Pull on connection to ensure fittings are secure. Improperly connected fittings can unexpectedly separate resulting in injury.

**⚠ WARNING**

**NEVER** place hands in front of nozzle.

**NEVER** attempt to attach or remove spray wand or hose fittings while Pressure Washer system is pressurized.

**DO NOT treat fluid injection injuries as a simple cut. Seek immediate medical attention.**

**HIGH VELOCITY fluid spray can cause objects to break, propelling particles at high speeds.**

**ALWAYS wear approved safety glasses** when using or doing maintenance on Pressure Washers. 

**ALWAYS** wear protective clothing to prevent accidental spraying.

**DO NOT** permanently secure spray wand trigger in open position.

**DO NOT** use spray wand that does not have a trigger lock or trigger guard in place and in proper working order.

**DO NOT** use acids, toxic or corrosive chemicals, poisons, insecticides, flammable solvents or bleach with Pressure Washer. Use of these chemicals can result in damage to equipment or serious injury or death.

**RISK OF EXPLOSION - Do not spray flammable liquids.**

**RISK OF INJECTION OR INJURY to persons.** Do not discharge stream at persons.

**RISK OF INJECTION** - Unit will start spraying when trigger is squeezed, if "ON/OFF" switch is in "ON" position, point gun in safe direction.

**GUN KICKS BACK** - Firmly hold with both hands.

**NEVER** allow children to operate a Pressure Washer. Keep children at a safe distance when an adult is using a Pressure Washer.

**NEVER** direct spray at Pressure Washer.

**NEVER** operate the Pressure Washer after it has tripped the GFCI or the main circuit breaker unless the cause has been identified and resolved.

**IF an extension cord must be used, keep the power cord connection out of any standing water, and use a heavy duty three-wire properly grounded type.** Keep the connection as far away as possible from the item being washed and any water runoff.

**⚠ WARNING**

**NEVER** cut or splice the power cord or extension cords.

**DO NOT** spray electrical apparatus and wiring.

**WEAR rubber-soled tennis shoes** or other footwear that provides some insulation when operating the Pressure Washer.

**COLD** water use only.

**FOR EITHER INDOOR OR OUTDOOR USE.** Store indoors.



**DO NOT** direct spray toward electrical outlets, switches or products connected to electrical service. Failure to observe this warning can result in electrocution resulting in severe electrical shock or burns and possibly resulting in death.

**NEVER run the pressure pump without the water supply connected and turned on. Non-repairable damage to the pump will occur.**

**RISK OF FALLING** - Pressure washer can create puddles of slippery solutions that can become hazardous.



**ENSURE** you stand on a stable surface while operating Pressure Washer. Initial kickback from engaging spray wand can you to lose your balance and fall resulting in minor to severe injuries.

**USE EXTREME CAUTION** if you must operate Pressure Washer from a ladder or scaffolding. Kickback from spray wand can result to loss of balance and result in a fall that could cause serious injuries.

**WHEN cleaning Pressure Washer,** ensure there are adequate slopes for drainage so solutions don't create puddles around unit that could result in slipping and falling.

**⚠ WARNING**

**RISK OF ELECTROCUTION:**



Connect only to properly grounded outlet. Do not remove ground pin. Inspect cord before using. **DO NOT** use if the cord is damaged. Keep all connections dry and off the ground.

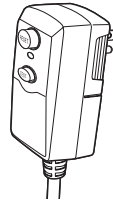
**DO NOT** touch plug with wet hands.

Connect to individual branch circuit only.

This product is provided with Ground Fault Circuit Interrupter built into the power cord plug. If replacement of the plug or cord is needed, use only identical replacement parts.

## GROUND-FAULT CIRCUIT - INTERRUPTER PROTECTION

This Pressure Washer is provided with a Ground-Fault Circuit-Interrupter (GFCI) built into the plug of the power supply cord. This device provides additional protection from the risk of electric shock. Should replacement of the plug or cord become necessary, use only identical replacement parts that include GFCI protection.



## GROUNDING INSTRUCTIONS

In the event of a malfunction or breakdown, grounding provides a path of least resistance for electric current to reduce the risk of electric shock. This tool is equipped with an electric cord having an equipment-grounding conductor and a grounding plug. The plug must be plugged into a matching outlet that is properly installed and grounded in accordance with all local codes and ordinances.

Do not modify the plug provided - if it will not fit the outlet, have the proper outlet installed by a qualified electrician.

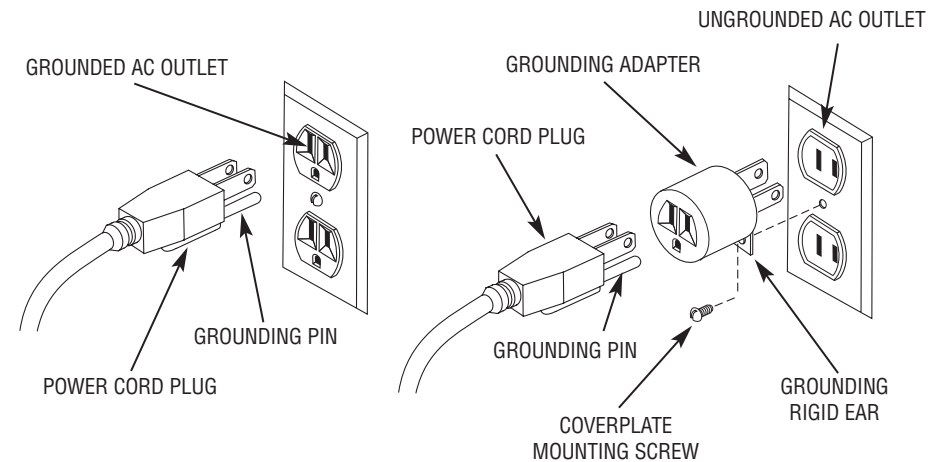
Improper connection of the equipment-grounding conductor can result in a risk of electric shock. The conductor with insulation having an outer surface that is green with or without yellow stripes is the equipment-grounding conductor. If repair or replacement of the electric cord or plug is necessary, do not connect the equipment-grounding conductor to a live terminal.

Check with a qualified electrician or service personnel if the grounding instructions are not completely understood, or if in doubt as to whether the tool is properly grounded.

Use only 3-wire extension cords that have 3-prong grounding plugs and 3-pole receptacles that accept the tool's plug.

Repair or replace damaged or worn cord immediately.

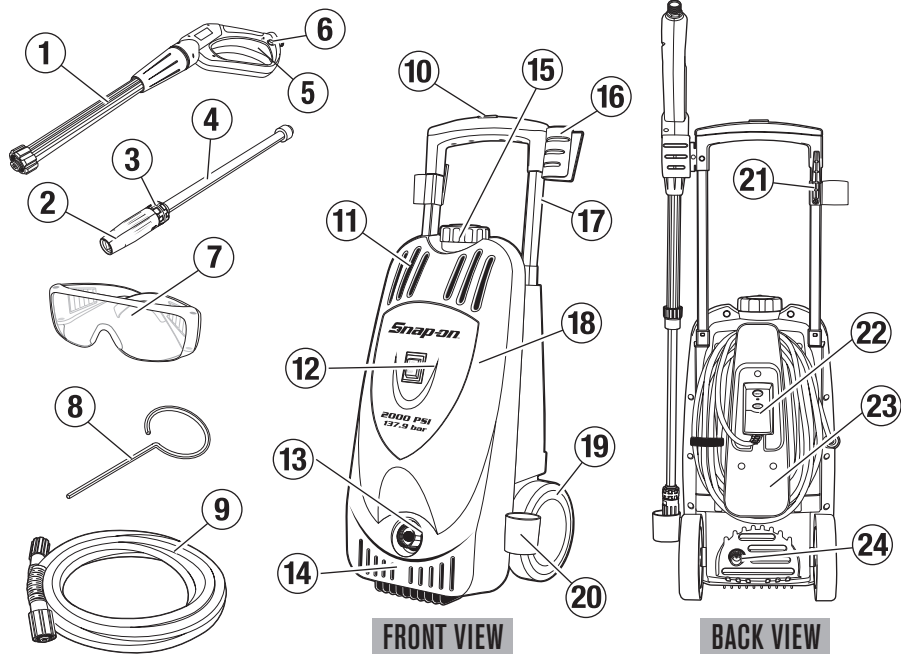
This tool is intended for use on a circuit that has an outlet that looks like the one illustrated in Figure 1. The tool has a grounding plug that looks like the plug illustrated in Figure 1. A temporary adapter, which looks like the adapter illustrated in Figure 1, may be used to connect this plug to a 2-pole receptacle as shown in Figure 1 if a properly grounded outlet is not available. The temporary adapter should be used only until a properly grounded outlet can be installed by a qualified electrician. The green-colored rigid ear, lug, and the like, extending from the adapter must be connected to a permanent ground such as a properly grounded outlet box.



## EXTENSION CORD USAGE

Use only 3-wire extension cords that have 3-prong grounding-type plugs and 3-pole cord connectors that accept the plug from the product. Use only extension cords that are intended for outdoor use. These extension cords are identified by a marking "Acceptable for use with outdoor appliances; store indoors while not in use." Use only extension cords having an electrical rating not less than the rating of the product. Do not use damaged extension cords. Examine extension cord before using and replace if damaged. Do not abuse extension cord and do not yank on any cord to disconnect. Keep cord away from heat and sharp edges. Always disconnect the extension cord from the receptacle before disconnecting the product from the extension cord.

## FUNCTIONAL DESCRIPTION



### PRESSURE WASHER FEATURES:

- |                           |  |
|---------------------------|--|
| 1. Gun                    | 13. Garden Hose Coupling/Water Inlet     |
| 2. Adjustable Nozzle      | 14. Air Outtake Louvers                  |
| 3. Pressure Adjust Collar | 15. Detergent Tank Lid                   |
| 4. Wand                   | 16. Gun Holder (Top)                     |
| 5. Trigger                | 17. Retractable Handle                   |
| 6. Trigger Safety Lock    | 18. Pressure Washer                      |
| 7. Safety Glasses         | 19. Wheel Assembly                       |
| 8. Nozzle Cleaning Needle | 20. Gun Holder (Bottom)                  |
| 9. Pressure Hose          | 21. Hose Hook                            |
| 10. Handle Release Button | 22. GFCI Power Cord                      |
| 11. Air Intake Louvers    | 23. Power Cord Hook                      |
| 12. On/Off Switch         | 24. Pressure Hose Connector/Water Outlet |

## PRESSURE WASHER TERMINOLOGY

Following are common terms associated with the use of Pressure Washers:

**PSI:** Pounds per square inch – common unit measure used for water pressure, air pressure, hydraulic pressure and pounds of force.

**GPM:** Gallons per minute (liters per minute [metric]) – common unit measure used for flow rate of water.

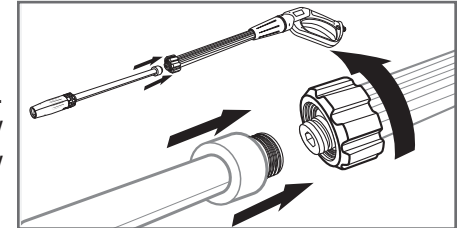
## ASSEMBLY & SETUP

This Pressure Washer requires some assembly. If you have any problems with the assembly of your Pressure Washer, please call the Pressure Washer helpline at **1-888-278-8092**. If calling for assistance, please have the model, revision, and serial number from the data tag available.

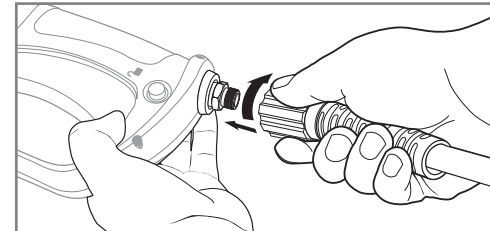
- Using a box cutter, cut open the Pressure Washer carton on top.
- Carefully remove all items from the box and inspect for completeness (see Functional Description).

### WAND/GUN CONNECTION

Insert the wand into the gun fitting outlet. Ensure that the threads are aligned properly and that the connection is secure. Securely tighten the nut by hand.



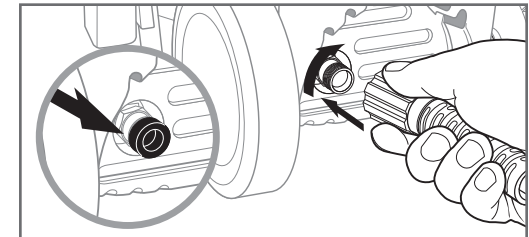
### PRESSURE HOSE/GUN CONNECTION



Unpack the pressure hose and connect the metal fitting to the gun inlet. Ensure that the threads are aligned properly and that the connection is secure. Securely tighten the nut by hand. Place the gun into the gun holder on the side of the Pressure Washer.

### PRESSURE HOSE/WASHER CONNECTION

- Remove and discard the protective plastic plug from the Pressure Hose Connector located on the rear of unit.
- Connect the pressure hose plastic fitting to the Pressure Hose Connector. Ensure that the threads are aligned properly and that the connection is secure. Securely tighten the nut by hand.

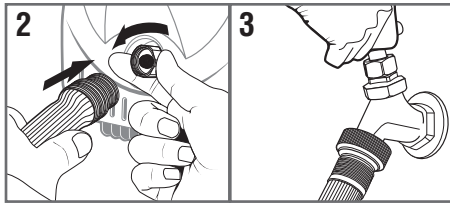


### GARDEN HOSE/WASHER CONNECTION

#### NOTE

**DO NOT** run the pressure washer without the water supply connected and turned on. Damage to equipment resulting from failure to follow this instruction will void warranty.

1. Before connecting the garden hose to the Pressure Washer, connect the garden hose to the water source and run water through the hose to flush out any debris. Shut off the water at the source.



2. Attach garden hose to the Pressure Washer coupling inlet at the lower front of the unit. Ensure that the threads are aligned properly and that the connection is secure. Securely tighten the nut by hand.

3. Turn on the water source.

**NOTE**

For best result, use a short garden hose (30 ft. or less length), cold water (less than 100 F) and adequate pressure (no less than 50 PSI).

**POWER SUPPLY CONNECTION**

**WARNING**

**KEEP all electrical connections dry and off the ground.**

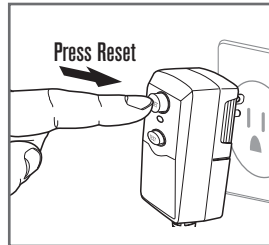
**NEVER touch the plug with wet hands.**

**NEVER cut or remove grounding blade (round longer pin) on GFCI attachment plug.**



1. Connect the Pressure Washer GFCI power cord to a dedicated electrical outlet.

2. Press the RESET button on the GFCI to ensure its proper operation.



**NOTE**

Outlet capacity must be 120V, 60HZ and minimum 15 AMP.

**OPERATING THE PRESSURE WASHER**

**WARNING**

**ALWAYS wear approved safety glasses when operating Pressure Washers. Spray can splash back or propel objects, including incorrectly attached accessories.**



**The high pressure stream of water that this equipment produces can cut through skin and its underlying tissues, leading to possible amputation.**

**Spray gun traps high water pressure, even when the motor is stopped and water is disconnected, which can cause injury.**



**Kickback from spray gun can cause you to fall.**

1. For your protection, wear the protective safety glasses (provided).

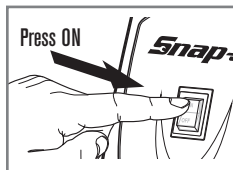
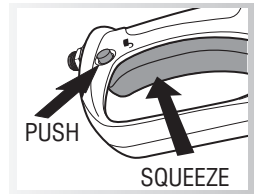
2. Place the Pressure Washer near the working surface.

**NOTE**

Make sure that the water source is turned on and all connections to the Pressure Washer and Spray Gun are secure and without any water leakage.

3. Carefully remove the gun from its holder.

4. Hold the gun securely with both hands. Point the gun in a safe direction. Make sure that the gun safety (the button above the trigger) is unlocked and squeeze the trigger to allow any air that is trapped inside the unit and hoses to escape. Continue to squeeze the trigger until a steady stream of water comes from the nozzle.

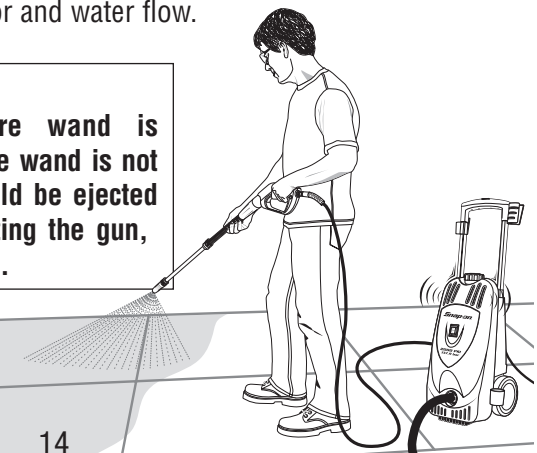


5. Turn on the ON/Off switch on the front of the Pressure Washer. **NOTE:** Motor does not start until trigger is pulled.

6. Point the gun in a safe direction and squeeze the trigger to start motor and water flow.

**WARNING**

**Make sure wand is SECURELY tightened to Gun. If the wand is not securely locked into place, it could be ejected under high pressure when operating the gun, possibly causing injury or damage.**



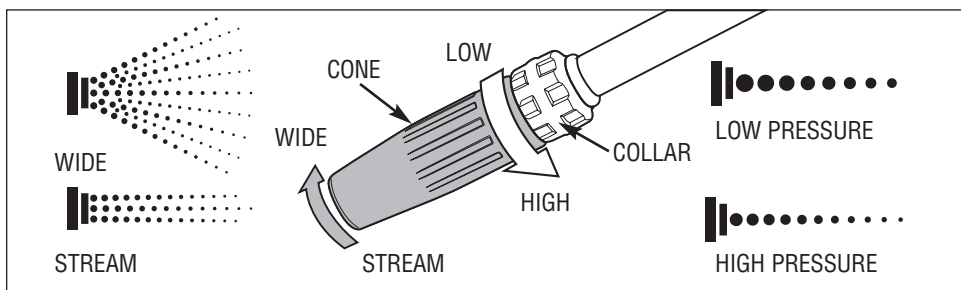
## WATER FLOW ADJUSTMENT

### ADJUSTING FOR FAN PATTERN

The angle of spray coming out of the nozzle may be adjusted by rotating the front of the nozzle (cone). This will vary the spray pattern from approximately a 0° narrow high impact stream (by turning the nozzle fully to the left) to a 60° wide fan spray (by turning the nozzle fully to the right).

A narrow stream has high impact force on the cleaning surface and results in maximum deep cleaning in a concentrated area. However, this narrow high impact spray must be used cautiously, as it may damage some surfaces.

A wide fan pattern will distribute the impact of the water over a larger area, resulting in excellent cleaning action with a reduced risk of surface damage. Large surface areas can be cleaned more quickly using a wide fan pattern.



### ADJUSTING FOR PRESSURE

The Adjustable Pressure Nozzle allows you to vary the pressure of your spray by turning the end of the nozzle (collar). Turning the collar fully to the right will reduce the pressure to its minimum. If the Pressure Washer has a detergent tank system you must use this minimum pressure setting in order to suction detergent.

Turning the collar fully to the left will increase the pressure to its maximum for greatest cleaning efficiency. Turning the collar changes the pressure but not the fan pattern.

#### NOTE

Detergent will **NOT** flow until the Pressure Adjust Collar is set (turned) to low pressure position.

## USING THE SPRAY WAND

#### NOTE

To prevent damage to your surface and to select an appropriate working pressure for your application, always start with lowest pressure setting and continue increasing the pressure until the best work result is achieved.

### USAGE TIPS:

- For most effective cleaning, keep spray nozzle from 8 to 24 inches away from cleaning surface.

- If you get spray nozzle too close, especially using high pressure mode, you may damage surface being cleaned.

- **DO NOT** get closer than 6 inches when cleaning tires.

## SHUTTING DOWN THE PRESSURE WASHER

The Pressure Washer motor runs only when the trigger is engaged. To shut off the Pressure Washer:

1. Release spray gun trigger.
2. Move unit's ON/OFF switch to OFF position.

**IMPORTANT:** Releasing the trigger will shut off the motor but does not shut off electrical power to the unit.

3. Turn off water supply.
4. **ALWAYS** point spray gun in a safe direction and squeeze spray gun trigger to relieve built up pressure in the unit.

#### NOTE

Spray gun traps high water pressure, even when motor is stopped and water is disconnected.

5. Engage trigger lock on spray gun when not in use. Place the gun in its holder on the side of the unit.
6. Disconnect GFCI plug from outlet and wrap power cord around the Power Cord Hook at the back of the pressure washer. Store the GFCI plug inside its housing in the center of cord intake.
7. Disconnect pressure washer from water supply and store the unit (see MAINTENANCE section).

## USAGE OF CLEANING DETERGENTS

### TO APPLY DETERGENT:

1. Select a detergent/cleanser appropriate for the intended application.
2. Prepare detergent solution as recommended by the manufacturer.
3. Remove the detergent tank lid located at the top of the Pressure Washer.
4. Fill tank with prepared detergent solution. A small funnel may help with this task. Replace the detergent tank lid.
5. Set (turn) the Pressure Adjust Collar to low pressure position.

#### NOTE

Detergent will **NOT** flow until the Pressure Adjust Collar is set (turned) to low pressure position.

6. Pull spray gun trigger and apply detergent to a dry surface, starting at lower portion of area to be washed and work upward, using long, even, overlapping strokes.

**NOTE**

Wetting the surface first is not recommended, as it dilutes the detergent and reduces its cleaning ability.

- Allow detergent to "soak in" for 3-5 minutes before washing and rinsing. Reapply as needed to prevent surface from drying. Do **Not** allow detergent to dry on surface (prevents streaking).

**TO RINSE:**

- Reset the Pressure Adjust Collar to high pressure, press the trigger and wait for the detergent to clear.
- Keep the spray gun a safe distance from the area you plan to spray.
- Apply a high pressure spray to a small area, and then check the surface for damage. If no damage is found, it is okay to continue cleaning.
- Start at the top of the area to be rinsed, working down with same overlapping strokes as you used for washing and applying detergent.

When you have completed use of the detergent injection system, continue to run in low pressure position and flush clean water through the detergent tank until it is thoroughly cleaned.

**NOTE**

Failure to clean properly will cause the injection system to become clogged and inoperable.

Stop the unit by pressing the ON/OFF button.

Disconnect electrical plug.

Turn off water and depressurize unit by squeezing trigger.

**CLEANING TIPS:**

- Never leave the Pressure Washer unattended while it is plugged into an electrical outlet and while water is supplied to the equipment.
- Never use the Pressure Washer water inlet to siphon detergent or wax.
- If you have the nozzle too far away from the surface being washed, the cleaning will not be as effective.

**IMPORTANT:** DO NOT get closer than 6 inches when cleaning.

**MAINTENANCE**

Regular maintenance will improve performance and extend life of Pressure Washer.

Pressure Washer's warranty does not cover items that have been subjected to operator abuse or negligence. Only by maintaining Pressure Washer in accordance with instructions in this manual will the full value of the warranty be honored.

Some adjustments will need to be made periodically to properly maintain the Pressure Washer. All service and adjustments should be made at least one time each season. It is important that the maintenance chart below be followed.

**MOVING AND STORAGE**

After each application or winter storage follow these instructions:

- When finished using the Pressure Washer, you must first drain and rinse the detergent tank.
- Run the Pressure Washer in low pressure until all of the soap is drained from the detergent tank.
- Pour clear water into the tank and run it through on low pressure as though it were detergent.
- Turn the machine OFF and squeeze the trigger to release the trapped pressure inside of the machine.
- Remove both the garden hose and pressure hose from the unit.
- Turn **ON** the machine and allow it to run for 5 seconds. (This will clear out most of the water trapped in the pump).
- Unplug the machine and store in a dry, climate controlled environment.

**NOTE:** Do not store the machine or accessories in a place where the temperature could drop below 40°F.

**AFTER EXTENDED STORAGE**

Scale deposits may form in the pump when it is not used for some time. This causes the motor to hesitate or not start up at all.

- Do not plug the unit into electrical outlet or connect the pressure hose to the unit.
- Connect garden hose to the unit and allow the water to exit from high pressure outlet for a few seconds to rinse the system.
- Shut off the water.
- Connect pressure hose to the gun and then lock hose safety device.

**CONNECTIONS**

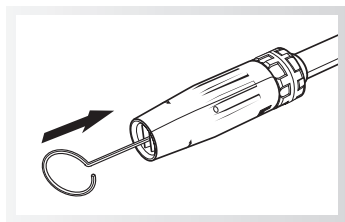
Connections (fittings) on Pressure Washer, pressure hose, gun and spray wand should be cleaned regularly and lubricated with non-water soluble grease to prevent leakage and damage to the o-rings.

**NOZZLE**

The nozzles should be lubricated with non-water soluble grease or light oil regularly. Clogging of the nozzle causes the pump pressure to build up too high and cleaning is required.

- Make sure Pressure Washer On/Off switch is set to Off and spray gun trigger is locked.

- Set the nozzle to high pressure setting to make the nozzle hole accessible.
- Clear blockage in nozzle by inserting the nozzle cleaning needle (provided) through center hole.
- After cleaning, remove the needle from nozzle and store for future use.



### LUBRICATION

This Pressure Washer does not require any maintenance on the pump or motor. Both assemblies are pre-lubricated and sealed, requiring no additional lubrication.

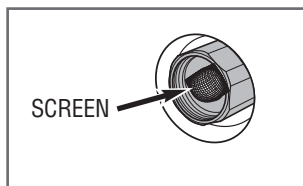
#### NOTE

A small amount of oil leakage is normal. If oil leakage persists or became worse, contact our customer service department.

### WATER INLET SCREEN (FILTER)

The Pressure Washer is equipped with a water inlet screen to protect the pump from foreign debris.

**CAREFULLY** remove debris from the screen using a nonabrasive and dull object (finger or Q-Tip). Make sure screen is not torn or broken.



#### WARNING

**Do not operate Pressure Washer without screen filter in place. Impurities entering pressure pump can cause internal damage.**

### COOLING SYSTEM

The air louvers, located in and around the Pressure Washer housing must be kept clean and free of any obstructions to ensure proper air cooling of the motor and pump during operation.

### TROUBLESHOOTING GUIDE

Problem	Probable Cause	Solution
Unit will not start (when trigger is depressed)	<ol style="list-style-type: none"> <li>Unit is not turned on.</li> <li>Loose or disconnected plug.</li> <li>GFCI has tripped.</li> <li>Thermal Switch has tripped.</li> </ol>	<ol style="list-style-type: none"> <li>Press ON/OFF Switch into ON position.</li> <li>Reconnect Plug.</li> <li>Push reset button on plug.</li> <li>Allow to cool and restart unit.</li> </ol>

### TROUBLESHOOTING GUIDE

Problem	Probable Cause	Solution
Unit will not start (when trigger is depressed)	<ol style="list-style-type: none"> <li>No AC power at the outlet.</li> <li>Main voltage supply is too low.</li> <li>Extension cord is too long or wire size too small.</li> <li>Defective ON/OFF Switch.</li> <li>Defective GFCI Plug.</li> <li>Defective Gun.</li> </ol>	<ol style="list-style-type: none"> <li>Main circuit breaker is tripped or outlet is faulty.</li> <li>Make sure main supply voltage is adequate (See specifications).</li> <li>Remove extension cord or use proper extension cord (See instructions).</li> <li>Call Customer Service: 1-888-278-8092.</li> <li>Call Customer Service: 1-888-278-8092.</li> <li>Turn off the unit. Remove the Gun and Hose assembly from high pressure outlet in the back of the unit. Redirect the outlet to a safe direction and switch ON the unit. If the unit starts and water comes out of the front, the Gun may need to be replaced. Call Customer Service: 1-888-278-8092.</li> </ol>
AC outlet circuit breaker trips	<ol style="list-style-type: none"> <li>Circuit (outlet) overloaded.</li> <li>Extension cord is too long or wire size too small.</li> <li>Nozzle partially blocked causing excessive pressure.</li> </ol>	<ol style="list-style-type: none"> <li>Make sure circuit is rated at 15 amps or greater and unit is plugged into a dedicated circuit.</li> <li>Use proper extension cord (see instructions).</li> <li>Clean Nozzle (see instructions).</li> </ol>

**TROUBLESHOOTING GUIDE**

<b>Problem</b>	<b>Probable Cause</b>	<b>Solution</b>
Motor stops suddenly	<ol style="list-style-type: none"> <li>1. Extension cord is too long or wire size too small.</li> <li>2. Thermal safety switch has tripped due to overheating and over-work.</li> </ol>	<ol style="list-style-type: none"> <li>1. Remove extension cord or use proper extension cord (See instructions).</li> <li>2. Make sure main supply voltage corresponds to specifications. Allow to cool and restart unit.</li> </ol>
Unit will not stop when trigger is released	<ol style="list-style-type: none"> <li>1. Gun/Hose Assembly is defective.</li> </ol>	<ol style="list-style-type: none"> <li>1. Remove Wand from the Gun and squeeze trigger to ensure that the water is coming out of the front of the Gun at a rate equal to the Garden Hose. Call Customer Service: 1-888-278-8092.</li> </ol>
Unit begins to smoke	<ol style="list-style-type: none"> <li>1. Overheated, overloaded or damaged motor.</li> </ol>	<ol style="list-style-type: none"> <li>1. Turn off unit and Call Customer Service: 1-888-278-8092.</li> </ol>
Trigger will not move	<ol style="list-style-type: none"> <li>1. Gun Safety Lock in engaged.</li> </ol>	<ol style="list-style-type: none"> <li>1. Release Safety Lock (See instructions).</li> </ol>
Gun/Hose - Leaking water	<ol style="list-style-type: none"> <li>1. Loose fitting.</li> </ol>	<ol style="list-style-type: none"> <li>1. Tighten fittings. If persists, Gun/Hose will need to be replaced. Call Customer Service: 1-888-278-8092.</li> </ol>
Pump is noisy	<ol style="list-style-type: none"> <li>1. Pump is sucking air.</li> </ol>	<ol style="list-style-type: none"> <li>1. Make sure hoses and fittings are air tight. Turn off machine and purge pump by squeezing trigger gun until a steady flow of water emerges through the nozzle.</li> </ol>

**TROUBLESHOOTING GUIDE**

<b>Problem</b>	<b>Probable Cause</b>	<b>Solution</b>
No water coming out of Wand	<ol style="list-style-type: none"> <li>1. Clogged Nozzle.</li> <li>2. Wand is attached incorrectly.</li> <li>3. Clogged filter.</li> <li>4. Kink in the Garden Hose or Hose is wrapped on a storage wheel.</li> <li>5. Gun/Hose Assembly is defective.</li> </ol>	<ol style="list-style-type: none"> <li>1. Clean Nozzle (See instructions).</li> <li>2. See instructions.</li> <li>3. Clean filter (see instructions)</li> <li>4. Unwrap the Garden Hose and lay it out flat to ensure that there are no kinks in the Hose.</li> <li>5. Remove Wand from the Gun and squeeze trigger to ensure that the water is coming out of the front of the Gun at a rate equal to the Garden Hose. Call Customer Service: 1-888-278-8092.</li> </ol>
Unit does not reach maximum pressure or pressure is irregular	<ol style="list-style-type: none"> <li>1. Diameter of garden hose is too small.</li> <li>2. Water supply is restricted.</li> <li>3. Not enough inlet water supply.</li> <li>4. Garden Hose length is too long.</li> </ol>	<ol style="list-style-type: none"> <li>1. Replace with a 5/8 inch or larger garden hose.</li> <li>2. Make sure garden hose has no kinks, leaks and blockage.</li> <li>3. Open water source fully.</li> <li>4. Shorten the length of the Garden Hose. We recommend a maximum length of 25 to 50 feet for City water supply and 30 feet for Well water supply.</li> </ol>

## TROUBLESHOOTING GUIDE

Problem	Probable Cause	Solution	
Unit does not reach maximum pressure or pressure is irregular	5. Water supply is over 100°F.	5. Provide cooler water supply.	
	6. Water inlet filter is clogged.	6. Clean the Screen filter (see instructions).	
	7. Water leaking from either Hose or Unit.	7. Stop water from leaking before using the unit or Call Customer Service: 1-888-278-8092.	
	8. Pressure hose is blocked or leaks.	8. Clear blocks in pressure hose or replace hose.	
	9. Spray wand is on low pressure position.	9. Turn spray wand to high pressure position.	
	10. Nozzle worn or not correct size.	10. Replace nozzle.	
	11. Gun or Hose failure.	11. Call Customer Service: 1-888-278-8092.	
	12. Pump sucking air from hose connections.	12. Make sure connection fittings are properly tightened.	
	13. Pump, Unloader or Valves are clogged or worn.	13. Call Customer Service: 1-888-278-8092	
	No detergent	1. Spray wand is in high pressure position.	1. Turn Pressure Adjust Collar to low pressure position.
		2. Detergent is too thick.	2. Dilute detergent.
		3. Damaged or clogged detergent suction tube.	3. Call Customer Service: 1-888-278-8092.
		4. Nozzle is clogged with debris.	4. Unclog nozzle using provided cleaning needle.

## TROUBLESHOOTING GUIDE

Problem	Probable Cause	Solution
Detergent Leak from inside the unit or won't hold detergent	1. Disconnected or Kinked Detergent Pick up Tube. 2. Chemical Tank Nipple Broken.	1. Call Customer Service: 1-888-278-8092. 2. Call Customer Service: 1-888-278-8092.
Leaking Oil from Pump	1. A small amount of leakage is normal.	1. If leakage persists, Call Customer Service: 1-888-278-8092.
Leaking water from bottom of unit	1. Machine Inlet connection is defective.	1. Check the Machine Inlet at the front of the unit to ensure that water is not leaking from it. If the connection is leaking, it will have to be replaced. Call Customer Service: 1-888-278-8092.
Spray wand leaks	1. Spray wand is not properly attached.	1. See instructions.
Detergent Tank fills up with water	1. Detergent Suction Assembly is defective.	1. Call Customer Service: 1-888-278-8092.

## SPECIFICATIONS

MAXIMUM PRESSURE	2000 PSI*
MAX WATER FLOW	1.4 GPM*
VOLTAGE	120V / 60HZ
CURRENT	13A
DETERGENT TANK	1.2 LITER
ELECTRICAL CORD	35 FT.

## SPECIFICATIONS

PRESSURE HOSE	25 FT.
INLET WATER PRESSURE	40-60 PSI

\*Meets PWMA-PW101 test requirement.

## 1 YEAR LIMITED WARRANTY

### Express and Exclusive Limited Warranty to Original Retail Buyer

Alltrade Tools LLC (hereinafter "Alltrade") expressly warrants to the original retail purchaser of the accompanying SNAP-ON™ Pressure Washer and no one else all parts of the product (except those parts referred to below which are specifically excluded from such warranty (see Exclusions) to be free from defects in materials and workmanship for a period of one year from the original date of purchase.

**SPECIAL WARRANTY NOTE FOR COMMERCIAL OR RENTAL USE:** The above warranty for this SNAP-ON™ Pressure Washer shall be effective for only 90 days from the original date of purchase if this tool is used for any **COMMERCIAL OR RENTAL PURPOSE**.

The date of purchase shall be the date of shipment to the original purchaser, or the date the original purchaser took possession, custody, or control of the product, whichever occurred first. This warranty shall be null and void if the product or any component thereof is modified or altered. This warranty does not apply to any other product and/or component thereof manufactured or distributed by Alltrade, and does not apply to products and/or components thereof designed, manufactured and/or assembled by others, for which Alltrade makes no warranties whatsoever. **THERE ARE NO WARRANTIES, WHICH EXTEND BEYOND THE DESCRIPTION ON THE FACE HEREOF.**

### WARRANTY PERFORMANCE

By purchasing this product, purchaser expressly acknowledges and agrees that their sole and exclusive remedy under this warranty shall be strictly limited to the repair or replacement of any covered nonconforming items or parts thereof provided that any such nonconforming item and/or part is promptly returned to an authorized Service Center within the applicable warranty period, with a written request by purchaser to repair and/or replace the nonconforming item and/or part. We recommend that you keep the original product packaging in the event you need to ship the unit. We suggest the package be insured against loss or in transit damage. When sending your product, include your name, address, phone number, e-mail address, dated proof of purchase (or copy) and a statement about the nature of the problem. Warranty coverage is conditioned upon purchaser furnishing Alltrade with adequate written proof that they are the original purchaser and of the original purchase date. Parts returned, freight prepaid and insured, will be inspected and, at Alltrade's option, repaired and/or replaced free of charge if it is found to be defective and sub-

ject to warranty. Alltrade retains the sole discretion to determine whether any item or part is nonconforming and, if so, whether the item and/or part will be repaired and/or replaced. If the unit is repaired, new or reconditioned replacement parts may be used. If Alltrade chooses to replace the product, it may replace it with a new or reconditioned of the same or comparable design. The repaired or replaced unit will be warranted under the terms of the remainder of the one year warranty period; covered defective parts not subject to normal wear and tear or other exclusions will be repaired or replaced, at Alltrade's option. During the warranty period, Alltrade will be responsible for the return shipping charges. Alltrade's repair and/or replacement of any nonconforming item and/or part thereof shall constitute fulfillment of all obligations to the purchaser. Alltrade shall not be responsible or liable for any expense, including freight charges, or repairs made outside Alltrade's facility or an Alltrade designated service, unless expressly agreed to by Alltrade in writing. Under no circumstances shall Alltrade bear any responsibility for loss of the unit, loss of time or rental, inconvenience, commercial loss, or consequential damages.

For the location of an Authorized Service Center nearest you, please call customer service at 1-888-278-8092.

This warranty does not cover parts damaged due to normal wear, abnormal conditions, misapplication, misuse, abuse, accidents, operation, improper storage, or freight damage. Parts damaged or worn by operation in dusty environments are not warranted. Failure to follow recommended operating and maintenance procedures also voids warranty.

**DAMAGE TO THE PRODUCT RESULTING FROM TAMPERING, ACCIDENT, ABUSE, NEGLIGENCE, FAILURE TO FOLLOW INSTRUCTIONS, UNAUTHORIZED REPAIRS OR ALTERATIONS, DAMAGE WHILE IN TRANSIT TO OUR SERVICE FACILITY, USE OF UNAPPROVED OR IMPROPER ATTACHMENTS OR ACCESSORIES, OR OTHER CAUSES UNRELATED TO PROBLEMS WITH MATERIAL OR WORKMANSHIP ARE NOT COVERED BY THIS WARRANTY.**

Alltrade will not be liable for the following: labor charges, loss or damage resulting from improper operation, maintenance or repairs made by other persons; pre-delivery services such as assembly, oil and lubricants, and adjustment; maintenance services that are normally required to maintain the product.

The use of other than genuine Snap-On™ Repair Parts will VOID the warranty.

### WARRANTY DISCLAIMERS

**EXCLUSION AND DISCLAIMER OF ALL OTHER EXPRESS WARRANTIES, GUARANTIES AND/OR REPRESENTATIONS, EXCEPT FOR THE LIMITED WARRANTY PROVIDED HEREIN, ALL OTHER EXPRESS WARRANTIES, GUARANTIES, AND/OR REPRESENTATIONS BY ALLTRADE AND OR ITS REPRESENTATIVE(S) REGARDING THE DESIGN, MANUFACTURE, PURCHASE, USE AND/OR OPERATION OF THE PRODUCT OR ANY COMPONENT THEREOF SOLD HEREUNDER, REGARDLESS OF WHETHER ANY SUCH WARRANTY, GUARANTY AND/OR REPRESENTATION, WRITTEN OR ORAL, ARISES BY OPERATION OF LAW AND/OR EQUITY AND/OR BY ANY ACT OR OMISSION OF ALLTRADE AND/OR ITS REPRESENTATIVE(S), OR THE**

BUYER, ARE HEREBY EXPRESSLY EXCLUDED AND DISCLAIMED BY ALLTRADE AND/OR ITS REPRESENTATIVES. PURCHASER KNOWINGLY AND WILLINGLY WAIVES ANY AND ALL SUCH WARRANTIES AND RIGHTS, CLAIMS AND/OR CAUSE OF ACTION ARISING THEREFROM OR BASED THEREON. PURCHASER'S SOLE AND EXCLUSIVE REMEDY IS AS STATED ABOVE.

EXCLUSION AND DISCLAIMER OF ALL IMPLIED WARRANTIES, INCLUDING THE IMPLIED WARRANTIES OF MERCHANTABILITY AND FITNESS FOR A PARTICULAR PURPOSE. NO WARRANTY, ORAL OR WRITTEN, OTHER THAN THE WARRANTY LISTED HEREIN IS MADE WITH REGARD TO THIS PRODUCT. ALL WARRANTIES AND/OR IMPLIED WARRANTIES, GUARANTIES AND/OR REPRESENTATIONS BY ALLTRADE AND/OR ITS REPRESENTATIVE(S) REGARDING THE DESIGN, MANUFACTURE, PURCHASE, USE AND/OR OPERATION OF THE PRODUCT OR ANY COMPONENT THEREOF SOLD HEREUNDER, REGARDLESS OF WHETHER ANY SUCH WARRANTY, GUARANTY AND/OR REPRESENTATION, WRITTEN OR ORAL, ARISES BY OPERATION OF LAW AND/OR EQUITY AND/OR BY ANY ACT OR OMISSION OF ALLTRADE AND/OR ITS REPRESENTATIVES. PURCHASER KNOWINGLY AND WILLINGLY WAIVES ANY AND ALL SUCH WARRANTIES AND RIGHTS, CLAIMS AND/OR CAUSES OF ACTION ARISING THEREFROM OR BASED THEREON.

PURCHASER'S SOLE AND EXCLUSIVE REMEDY IS AS STATED ON PRECEDING PAGES.

#### **LIMITATIONS OF LIABILITY**

IN NO EVENT SHALL ALLTRADE AND/OR ITS REPRESENTATIVE(S) BE LIABLE FOR INDIRECT, INCIDENTAL, SPECIAL AND/OR CONSEQUENTIAL DAMAGES OF ANY KIND ARISING OUT OF OR RELATED TO, DIRECTLY OR INDIRECTLY, ANY BREACH OR PROVISION OF ANY AGREEMENT BETWEEN ALLTRADE AND/OR ITS REPRESENTATIVE(S) AND PURCHASER, AND WARRANTY HEREUNDER, AND/OR THE EXISTENCE, DESIGN, MANUFACTURE, PURCHASE, USE AND/OR OPERATION OF ANY ITEM(S) SOLD HEREUNDER EVEN IF ALLTRADE AND/OR ITS REPRESENTATIVE(S) HAS BEEN ADVISED OF THE POSSIBILITY OF ANY SUCH DAMAGES. IN NO EVENT, WHETHER BECAUSE OF A BREACH OF CONTRACT, WARRANTY, TORT (INCLUDING NEGLIGENCE) OR OTHERWISE, SHALL ALLTRADE'S AND/OR ITS REPRESENTATIVE (S) LIABILITY EXCEED THE PRICE OF THE PRODUCT. ALL LIABILITY CONNECTED WITH THE USE OF THIS PRODUCT SHALL TERMINATE UPON THE EXPIRATION OF THE WARRANTY PERIODS SPECIFIED ABOVE.

#### **LIMITATIONS ON WARRANTY DISCLAIMERS**

Some states do not allow limitations on how long an implied warranty lasts and some states do not allow the exclusion or limitation of the incidental or consequential damages, so part or all of the above limitations or exclusions may not apply to you. This warranty gives you specific legal rights, and you may also have other rights, which vary from state to state.

If your product is not covered by this warranty, please call our Customer Service Department at 1-888-278-8092 for general repair information, and charges and the location of your nearest authorized service facility.